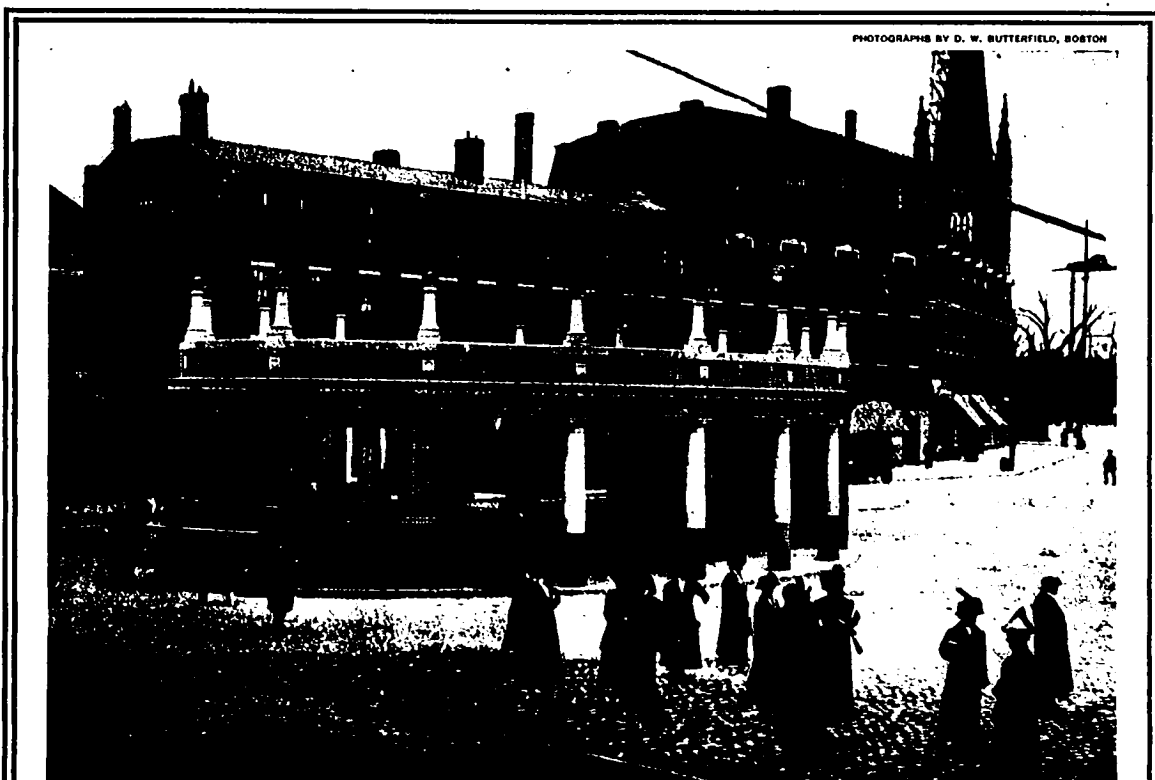


JANUARY 18, 1912

PRICE FIVE CENTS

THE YOUTH'S COMPANION

NEW ENGLAND EDITION



STATION AT HARVARD SQUARE, CAMBRIDGE



MASSACHUSETTS AVENUE ENTRANCE

The Cambridge Subway of the Boston Elevated Railway
Now Nearly Done